



Emerging

into our next 50 years



BAYVIEW

A POINT OF VIEW

Contents

- Executive Message 3
- Groundbreaking Ceremony 4-5
- Highlights 6-7
- Storytelling in Creative Ways 8-9
- Donor Spotlight 10-11
- Our Generous Donors 12-13
- Community Outreach 14-17
- Our Finances and Staff 18-19





Photo by Rice Fergus
Miller Vizlab, Austin Flink

From the outside, the “cocoon” looks as if it’s resting, but inside, every part of the “caterpillar” is changing.

Message from our Board Chair & the CEO

Bayview’s 55th year brought a major milestone, a rebirth. After years of planning, our renovation was launched, metaphorically entering into a **chrysalis** phase. Bayview has begun its transformation to better serve current and future residents!

2016 was the year of finalizing the vision, assembling the necessary teams and launching a twenty-month construction project.

The **vision** is to reinvest in the bricks and mortar by upgrading essential mechanical systems, erecting a new addition for assisted living and memory care, creating new independent living units, and enhancing a wide range of amenities across the community while maintaining the qualities that make Bayview fundamentally unique.

Multiple **teams** converged to create and execute this vision. The Board of Trustees and the Executive Team brought in national experts including Ziegler Investments and CliftonLarsonAllen LLP to develop a financially sound project offering to the bond market. An obligated group comprised of Bayview Manor Foundation and Bayview was formed and, under the Washington Housing Authority, \$57 million in tax-exempt bonds were sold to 17 mutual fund investors at historically low interest rates.

Seattle was – and is - in the midst of a record building boom with the most construction cranes in the nation; we are excited to be included in that number. The team of Rice Fergus Miller Architects, Andersen Construction and project manager Julie Lawton, took the helm and broke ground last August, officially launching our transformation.

From the outside, the “cocoon” looks as if it’s resting, but inside, every part of the “caterpillar” is changing. We know that change can be difficult because, as humans, we are wired to seek stability and routine. The scale of this project and its phasing and complexity, marks 2016 and 2017 as a time of challenge. The Board and Executive Team know that communication is an essential tool in easing the impact of the project on our residents and visitors.

As we look forward to completing the different phases, and ultimately the whole project, Bayview looks with excitement to exploring new opportunities while treasuring our unique family culture.

Mary Cordts *Bruce Winchell*
Mary Cordts, CEO Bruce Winchell, Board Chair



On August 4, 2016

residents, staff and the

greater community came

together to celebrate our

GROUNDBREAKING CEREMONY

Photo by Rice Fergus Miller Vizlab, Austin Flink



Savoy 2016

Swingin' At The Savoy

The 2016 annual gala brought together a passionate community. Below image: Residents Marian and Fred, along with guests, enjoyed dancing, good conversations with friends old and new, and felt renewed excitement throughout the evening.



We are grateful for the support of our presenting sponsors: Andersen Construction and Ziegler Investments. Thanks to our leadership sponsors: Rice Fergus Miller, Husky Senior Care, Infinity Rehab, 3rd Third Marketing and Auburn Mechanical.

On October 7th 2016, Bayview held its 3rd annual "Savoy Swingin' At The Hall." This event coincided with Bayview's 50+ years as a neighborly, caring community and toasted the future. Over 130 Bayview residents, families and friends reveled in an evening of entertainment and inspiration in the splendor of the McCaw Hall Grand Lobby.

This year's gala provided a nostalgic and wistful atmosphere; as the attendees, whom were 'dressed to the nines,' dined on gourmet cuisine and danced the night away to the swinging sounds of a big band. All the fun was punctuated by a stirring video testimonial highlighting the generosity of Bayview residents.

To view our full Savoy gallery and mission moment video visit:
www.bayviewseattle.org/savoy





More Highlights

As we look back at 2016, we see not only the good that was done but the steps that have been taken to ensure we continue to lay the foundations of our mission for the coming years. Here are some of our fondest memories from 2016.

A glimpse of some of our speakers



2nd Annual Breakfast Lecture Series on Healthy Aging with *Dr. Michael Vitiello*

We love breaking myths about aging! Dr. Vitiello, internationally recognized expert on sleep and sleep disorders in aging, explained that growing older does not mean losing one's ability to get a good night's sleep. Thank you Dr. Vitiello for teaching us that sleep is one of the key pillars of healthy aging. Visit faculty.washington.edu/vitiello for more information.

"Two Raging Grannies" Starring *Hinda Kipnis and Shirley Morrison*
Longtime activists Hinda Kipnis and Shirley Morrison hosted a documentary showing and Q & A for Bayview guests. "Two Raging Grannies" is a touching and thought-provoking documentary that challenges the idea that we must continue to shop, consume and amass to keep the economy growing. Visit tworaginggrannies.com for more information.



Presentation at the National Center of Creative Aging *Nancy Weinbeck*

Bayview Director of Residential Operations Nancy Weinbeck, filmmaker Scott Jackman and psychologist Karen Tanzy presented on the national stage in Washington DC. They shared their powerful experiences of film-making with seniors. Visit youtube.com/retireatbayview to watch the full presentation.



Meet and Greet with New York Times Bestselling Author *J.A. Jance*

Author J.A. Jance is a storyteller. She tells stories much in the same way that people breathe - it comes naturally. It's neither visible nor cerebral, and to stop takes the fullness of life away. We thank J.A. Jance for stopping by to speak to our jam-packed audience! Visit ja-jance.com to view her latest book, "Clawback."





Storytelling in Creative Ways

In 2016, Bayview premiered two films called “Express Yourself” and “Look Closer.” All Bayview films have resident participation at every level: story creation, scriptwriting, set design, directing, singing, dancing, acting, and more. These films promoted positive images of aging and are testimony to the freedom and power that comes with age.

Nancy Weinbeck, Bayview Director of Residential Operations, filmmaker Scott Jackman and psychologist Karen Tanzy presented at the National Center for Creative Aging Conference on September 26th in Washington D.C. At this conference, a social gerontologist from The Hague in the Netherlands approached the team in expressing interest in developing a joint world-wide movie for seniors. Stay tuned for more details.

Bayview’s pet documentaries on Mr. Pickles and Frankie *Blue Eyes* have also received widespread attention. With over a million online video views, Mr. Pickles’ documentary was invited in 2016 by the Seattle International Film Festival (SIFF) to participate in the 1 Reel Film festival for Bumbershoot in Seattle’s Music and Arts Festival. Look out for Mr. Pickles’ story in the *National Geographic Kids Books: 125 Pet Rescues* slated to be published in early 2017.

Mr. Pickles’ Documentary Showing at Bumbershoot



Visit youtube.com/retireatbayview to view our new short films!



At LeadingAge Washington's annual conference, Bayview took home 4 awards for Judges Innovation, Social Media, Video, and Public Relations.



Donor Story:

Mariko Fujioka

20 years goes by fast! That's how long Mariko Fujioka has been a resident and supporter of Bayview. Mariko was born in Seattle but she and her family were relocated to Minidoka internment camp during World War II. Not allowed to move back east of the Cascades, Mariko relocated to Milwaukee after her brother gave her his savings so she could leave Minidoka. Mariko eventually earned her Bachelor's degree in bacteriology and went on for additional post-baccalaureate studies in microbiology. After several years she rejoined her family in Chicago and spent much of her career there, reconnecting with friends from Seattle who also had relocated. One of these friends, Margaret Ouchi, a public health nurse and lobbyist on behalf of nursing associations, later became a Bayview resident and connected Mariko with several other public health nurses who were friends in Chicago. Upon retirement they renewed their social ties.

Mariko returned to Seattle when she retired to be close to her niece and nephew and her old friends. She was impressed with Bayview right from the start, especially loving the views and the location. A longtime supporter of the arts, she used Bayview as her base for her volunteer job at Seattle Symphony. It wasn't long after moving to Bayview that she learned of Bayview Manor Foundation and its mission to support residents who outlived their funds. She was so impressed with how long residents were living at Bayview, to the point some outlived their funds that she wanted to support that cause. So Mariko became a donor to support her fellow residents. Her closest friends from Bayview are gone now, but she still says Bayview is a great place to be. While no longer venturing out like she used to, she enjoys strolls on the Terrace patio to get fresh air and to keep moving. Mariko says "whether or not you have family, Bayview is a good place." We are grateful to Mariko and others like her who choose to support their fellow residents through their generous gifts to the Foundation.





“Never believe that a few caring people can’t change the world. For, indeed, that’s all who ever have.”

Margaret Mead

Bayview Manor Foundation is more than a safety net for Bayview residents in need; its support is a statement of faith and dedication to our fellow man. On the following pages, we’ve highlighted those who made contributions in 2016 to the Foundation’s mission. Their generosity in serving and caring for others is sincerely appreciated.

We would also like to acknowledge those who have made lasting gifts as part of their estate planning. A planned gift or bequest is a wonderful way to express gratitude for the kindness and quality of resident life at Bayview, or to continue providing benefits to Bayview residents now and in the future.

LEGACY DONORS

Vera Cornall

Sylvia Cowe

Marion Fish Cox

Clayton E. & Helen H. Danner

June David

Florence James

Chandler Jones

Alma McKnight

Alma L. Nelson

Elizabeth (Betty) Waldhaus

Although every effort has been made to ensure the accuracy of this listing, we apologize for any errors. Please report omissions or corrections to (206) 301-4410.

Bayview Manor Foundation acknowledges the generosity of these donors for the year 2016



\$20,000+

Anonymous

\$10,000-\$19,999

Jens & Marion Bakke

\$5,000-\$9,999

Tom & Orian Harrington

Anne Norris

\$1,000-\$4,999

Chuck & Marilyn Blankenship

Mary Cordts

Estate of Vera Cornell*

Johna Ferguson

Merrie Good

Bea Granen

Peter R. & Maxine Henning

Sadako Houghten

William Jordan

Helen Marshall

Lee & Phil McCluskey

Wilbur Choy & Nancy Adachi-Osawa

Dave & Jo Ann Peterson

Robert & Virginia Rutledge

Wes & Carolyn Uhlman

Nancy & Martin Weiss

Bruce & Janet Winchell

\$500-\$999

Wayne & Betty Bruning

Jan & Chuck Gould

Marjorie Guy

Bunny Hammersla

Edward & Mary Henderson

Steven Jager

Ron & Mavis Kreizenbeck

Robert & Donna McIntosh

Kim Miller

Shirley Rehngren

George Smith

Jack & Harriett Trowbridge

Bob & Susan Vukich

Marion Watanabe

Up to \$499

Anonymous

Grace Bailey

Charlotte Bain

Barbara Beaumont

Teru Beppu

Mary Body

Anonymous

Hugh & Shannon Brannon

Rose-Marie Brown

Tom Carlson & Dale Alekel

Tom Challoner*

Carl Christensen

Madeline Conom

Carolyn & Dick Evans

Jennifer & Dan Flick

Bob & Diana Forman

Kristina Gonzalez

Marcelle Hickman

Rev Ron & Lois Hines

Edward Clark & Patricia Johnson

Curt & Hazel Johnson

Fred & Marian Karpoff

Jenifer Keane

Greg Key & Larry Knapp

William Laythe

Martha Lee

Flo Lentz

Al & Darcy Levine

Colleen Long

Joseph Matsen

David & Judy McNeal

Ann Morgan

Arleen Nelson

Dottie Neufeld

Anthony Neupert

Ninth Floor Residents

Marion Schroeder

Leslie Ann Smith

Pat Sobeck

Susan Swope

Ted & Rosa Lea Taylor

*Deceased

Although every effort has been made to ensure the accuracy of this listing, we apologize for any errors. Please report omissions or corrections to (206) 301-4410.





Message from the Foundation President

Bayview Manor Foundation contributed over \$412,000 to Bayview in 2016. We subsidized nine anonymous residents who, through no fault of their own, were without the financial resources to continue living with their Bayview friends. We also supported other programs and services which furthered the mission of Bayview, such as assisting with uncompensated care for Skilled Nursing residents and purchasing updated food service equipment.

Our 2016 audit was successful, building on improved financial practices begun in 2015 and achieved with the vital assistance of Bayview's finance leadership. As part of an Obligated Agreement with Bayview, the Foundation played a strong role in supporting the construction bond financing program. We also sponsored resident information sessions focused on estate planning and planned giving. We remain financially sound, with contributions and investment income about equal to disbursements, and a year-end asset total of \$4.5 Million. We look optimistically to another successful year in 2017 and thank you for your continued support.

Jens Bakke

Jens Bakke, Foundation President

\$2,467
Seniors & the Arts,
and Intergenerational
Programs

\$7,635
Supporting Successful
Aging and Senior-
Focused Nonprofits

\$6

Reaching Beyond Our Walls

Our greatest rewards are often found in serving others. Bayview has been involved with providing financial and in-kind support to the greater community since 1961. Bayview serves the above 5 areas.

Resident Bob Mitchell donating his handcrafted blocks to Mary's Place in Seattle

\$45,102
Being a Good Neighbor
and Supporting
the Local Community

\$1,700
Leadership Development
and Deepening the
Capacity of Those
Who Serve

639,433
Charitable
Care



4th Annual Bazaar Proceeds go to Queen Anne Food Bank

Bayview's Fourth Annual Holiday Bazaar was held in late November 2016. Led by a resident Bazaar Committee of twelve people co-chaired by Dottie Neufeld and Helen Marshall, with staff support from Jan Anderson, this year's "Hard-Hat" Bazaar and Bake Sale was scaled back in size and targeted for in-house participation and sales only, due to onsite construction. Resident crafters, needleworkers, organizers, artists, "treasure collectors" and other volunteers began working in late summer. The committee nominated local non-profits as potential recipients of bazaar proceeds, and selected the Queen Anne Food Bank as the chosen charity for 2016. The executive director of the food bank was invited to make a presentation at Bayview during the fall to publicize and acquaint our community with its work.

Bazaar Day was, as previously, an enjoyable and festive time for all who volunteered or shopped, with the proceeds totaling in excess of \$3,400—a remarkable feat given the intentionally smaller size of the event! A check was presented to a

QAFB representative invited to join the committee at lunch in January 2017 (image above).

The goals of the bazaar were successfully met once again in 2016: not only to benefit a worthy charity in our neighborhood of Seattle, but to promote community-building among our residents and to help new residents to find a "point of entry" into this community and the friendships and activities it provides.





Volunteer Making an Impact
Morgan Wood

Morgan has become vital to helping seniors with special needs in Bayview's Skilled Nursing activity program. He reads stories, helps with meals and exercises, and connects on a deep level with people who have struggles not unlike his own.

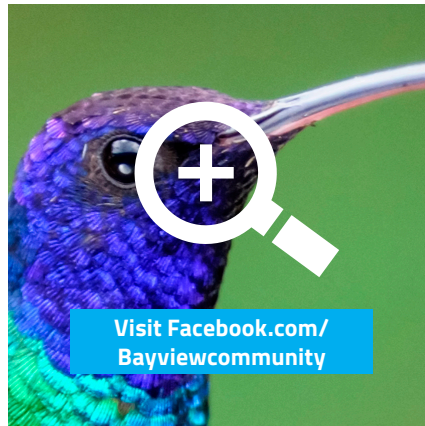


1,250 hours
In 2016, 40 community
volunteers have
donated over 1,250
hours to Bayview.

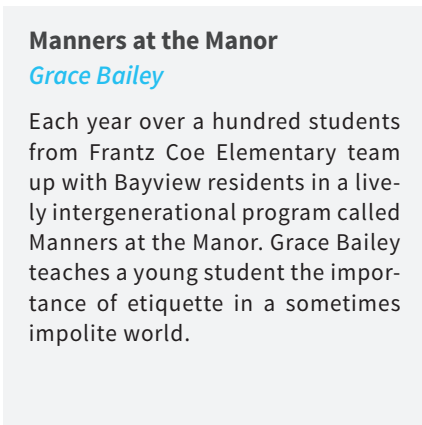


**Annual Chapel
Offering Grants:**

\$1,000 each was donated to these nonprofits: Queen Anne Helpline, Elizabeth Gregory Home, Bayview Manor Foundation and InvestED.



Visit [Facebook.com/Bayviewcommunity](https://www.facebook.com/Bayviewcommunity)



Manners at the Manor
Grace Bailey

Each year over a hundred students from Frantz Coe Elementary team up with Bayview residents in a lively intergenerational program called Manners at the Manor. Grace Bailey teaches a young student the importance of etiquette in a sometimes impolite world.

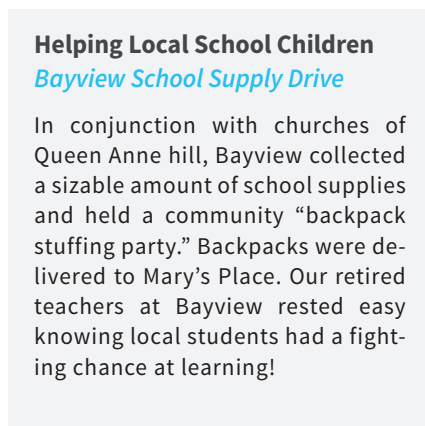


Making a Difference at Swedish Hospital in Ballard:
The Knitting Ladies

In 2016, the ladies of Bayview knitted and donated 286 total items consisting of 40 blankets, 20 sweaters and 226 hats. Between 2010 and 2016, these amazing ladies have knitted over 1,667 items! Thanks to the residents and Diane Wheeler for making this happen each year!



Volunteers Anna and Katy replanted the Skilled Nursing patio garden as one of their projects of giving to the community.



Helping Local School Children
Bayview School Supply Drive

In conjunction with churches of Queen Anne hill, Bayview collected a sizable amount of school supplies and held a community "backpack stuffing party." Backpacks were delivered to Mary's Place. Our retired teachers at Bayview rested easy knowing local students had a fighting chance at learning!



Bayview Obligated Group Statement of Financial Position*

Assets	2016	2015
Current Assets	\$8,344,318	\$5,899,333
Limited Use funds for Construction	\$45,095,620	N/A
Investments	\$11,147,879	\$8,169,920
Plant and Equipment	\$17,909,280	\$6,211,193
Land	\$12,698,979	\$12,698,979
Other Assets	N/A	\$1,278,633
Total Assets	\$95,196,076	\$34,258,058
Liabilities & Net Assets	2016	2015
Current Liabilities	\$5,023,000	\$2,128,137
Long Term Liabilities	\$68,121,111	\$10,978,344
Total Net Assets	\$22,051,965	\$21,151,577
Total Liabilities & Net Assets	\$95,196,076	\$34,258,058
Statement of Operations	2016	2015
Total Support & Revenue	\$14,140,386	\$13,888,787
Total Expenses	\$13,484,708	\$13,443,556
Operating Margin	\$655,678	\$445,231

*In 2016, Bayview entered into a Master trust indenture which created an obligated group combining Bayview and the Bayview Manor Foundation. The financial information in this year's annual report is presented in a combined matter to represent the total obligated group for both years.

Leadership Team

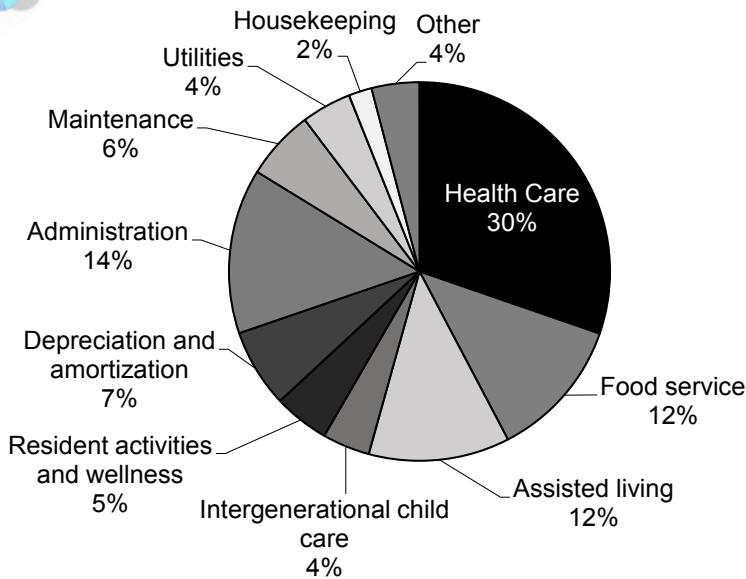
Mary Cordts, Chief Executive Officer
 Joyce Doucet, Chief Financial Officer
 Jan Anderson, Director of Spiritual Care
 Janelle Ansell, Health Services Administrator
 Lynn Arntuffus, Director of Activities
 Sharon Bare, Director of Nursing Services
 Jill Chang, Director of Creative Communications
 Dan Galvin, Director of Food Services
 Jeff Goldsmith, Director of Wellness
 Jamie Hart, Director of Social Services
 Lea Miller, Director of Sales
 Pete Rezendes, Director of Facilities
 Jackie Schooley, Director of Intergenerational Children's Center
 Nancy Weinbeck, Director of Residential Operations

Board of Trustees

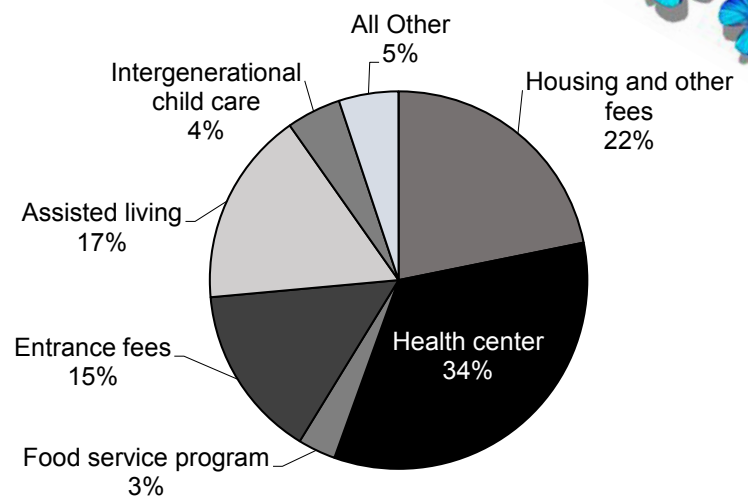
Bruce Winchell, Chair
 Nancy Waiss, Immediate Past Chair
 David Peterson, Vice-Chair
 Jan Gould, Treasurer
 Molly Henderson, Secretary
 Suzanne Barsness, Trustee
 Ronald Hines, Trustee
 Al Levine, Trustee
 Wes Uhlman, Trustee
 Marion Watanabe, Trustee & Resident
 Jens Bakke, Ex-Officio Trustee & Resident
 Richard Blakney, Ex-Officio Trustee & Resident
 Kristina Gonzalez, Ex-Officio Trustee
 Susan Vukich, Trustee Emeritus



2016 Expenses



2016 Revenue



We were pleased to welcome new Board members Ron Hines, Kristina Gonzalez and Dick Blakney in 2016.



With great gratitude, we said farewell to Pete Henning, Hugh Brannon, Jim Russell and Sam Konswa.




Advisory Board

- Steven Jager, Chair
- Wayne Bruning
- Carl Christensen
- Ken Freeman
- Greg Key
- Joe Matsen
- Bob McIntosh
- David McNeal
- Tony Neupert
- Annalee Oakes
- Susanna Ray
- Steve Sankey
- Pat Soback
- Scott Stover

Bayview Manor Foundation Board of Directors

- Jens Bakke, President & Resident
- Bob Stevenson, Secretary & Resident
- Kim Miller, Treasurer
- Mary Body, Resident
- Jo Ferguson, Resident
- Carol Jensen
- Doug Jordan
- Ron Kreizenbeck
- Jay Marsh
- Phil McClusky, Resident
- Jack Trowbridge, Resident
- Dana Twilight



 (206) 284-7330

 BayviewSeattle.org

 11 West Aloha Street | Seattle, WA 98119

 [Facebook.com/BayviewCommunity](https://www.facebook.com/BayviewCommunity)

 [Twitter.com/RetireatBayview](https://twitter.com/RetireatBayview)

 [Youtube.com/RetireatBayview](https://www.youtube.com/RetireatBayview)



BAYVIEW

A POINT OF VIEW

Transforming the Experience of Aging